

Stadstuinen, Rotterdam

KRISTINN PÁLSSON

322

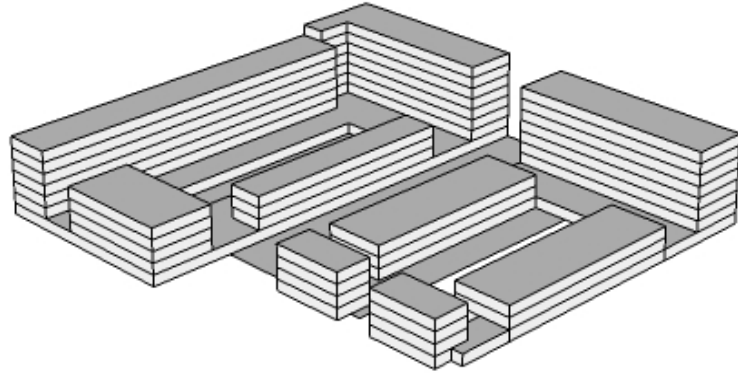
Stadstuinen area of Rotterdam's Kop van Zuid is a residential area that combines the suburban and urban lifestyle. It is mainly formed of an open urban block with mixed use housing and different styles of living. It has apartment building from about six to eight storeys high forming a wall around the area. They form a barrier for the noise of the street. Around each urban block unit there are many different housing types integrated together having a mix of private and public areas in the centre.

The project comprises 10 blocks containing approximately 600 dwellings, some 8.8 square kilometers of commercial space, a primary school, a variety of outdoor spaces and undercover parking.

KCAP designed four block of the area, all four corners. Other architects for the sight were Joke Vos and DKV.

323





326

The Stadstuinen (City Gardens)

Plan: KCAP

Location: Rotterdam Kop van Zuid, the Netherlands

Year: 1996

FAR 2.5 %

Footprint: 6.328 m²

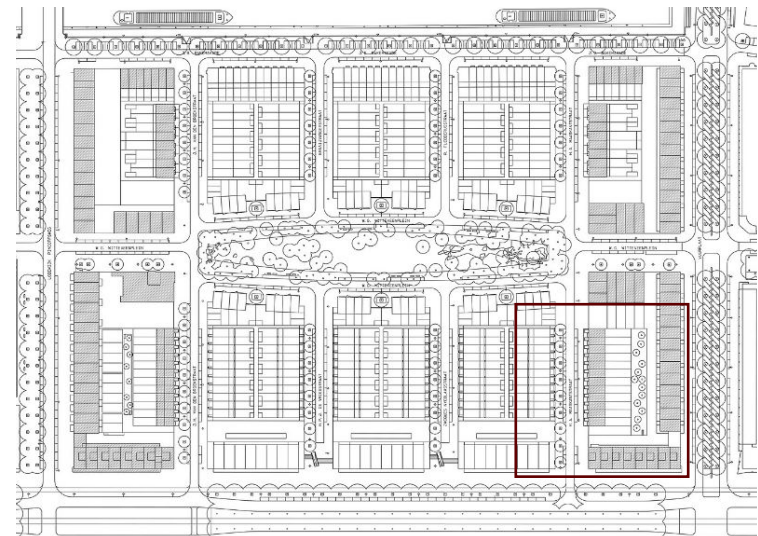
Floors: 4-8

Total floor area: 25.141 m²



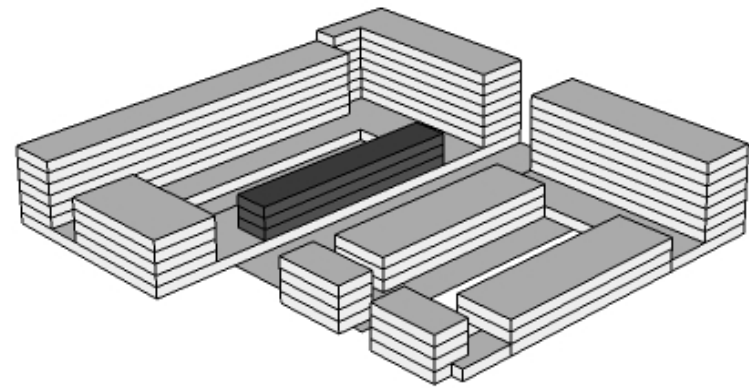
Aerial © KCAP.eu

327



Isometric line drawing © KCAP.eu

328



The Stadstuinen row houses

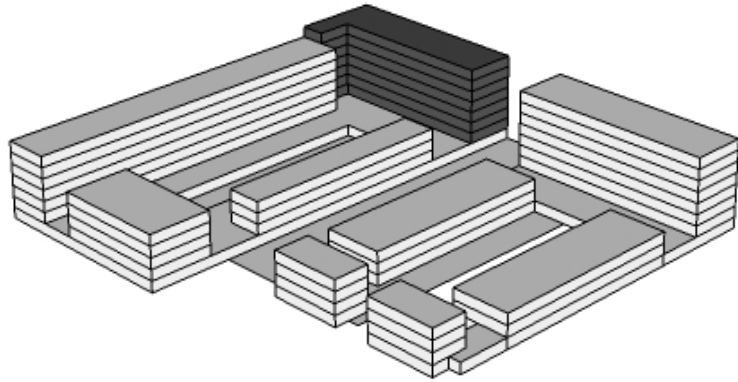
Architect: KCAP
Year: 2002

GFA: 2.440 m²
Depth: 10 m
Width: 5 m
Length: 61 m
Height: 12 m
Floors: 4



329

Courtyard/private rowhouse gardens © KCAP.eu



330

The Stadstuinen lamella

Architect: KCAP
Year: 2002

GFA: 6.600 m²

Depth: 15 m

Width: 6 m

Length: 55 m

Height: 24 m

Floors: 8



331

Outdoor lamella corridor © KCAP.eu



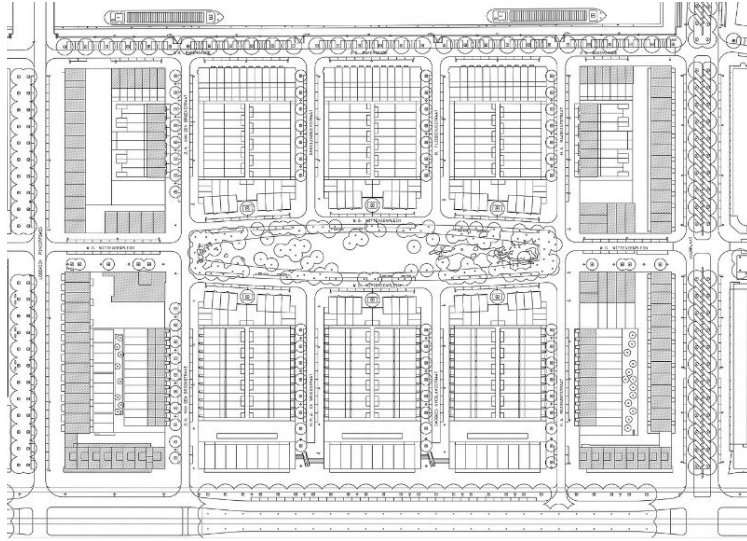
The Wintertuin (Winter Gardens) © KCAP.eu



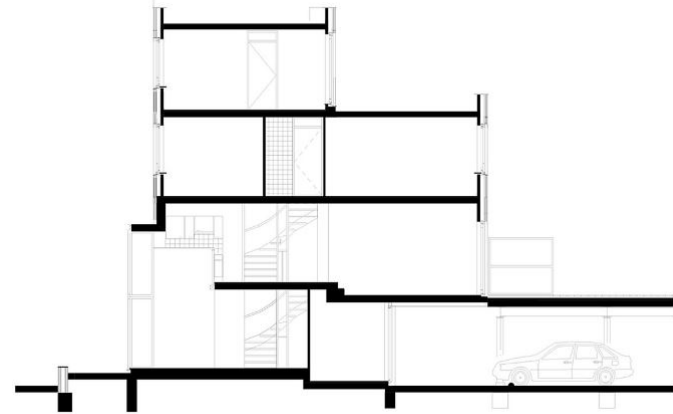
External corridor © KCAP.eu



Lamellas © KCAP.eu

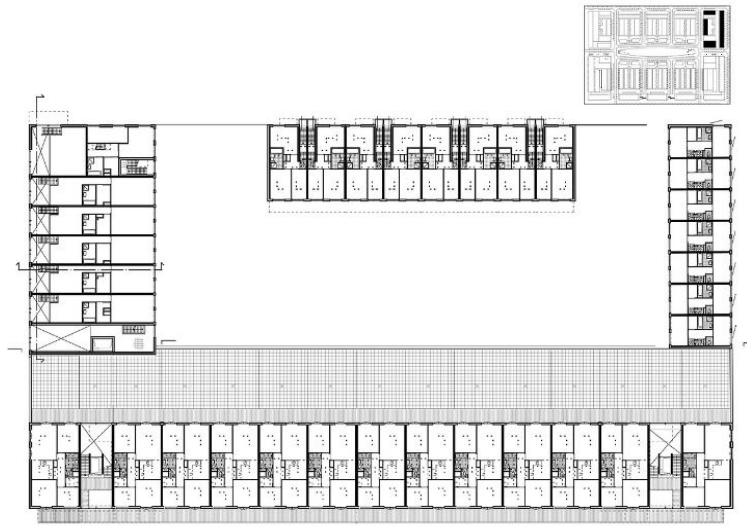


Arealplan © KCAP.eu

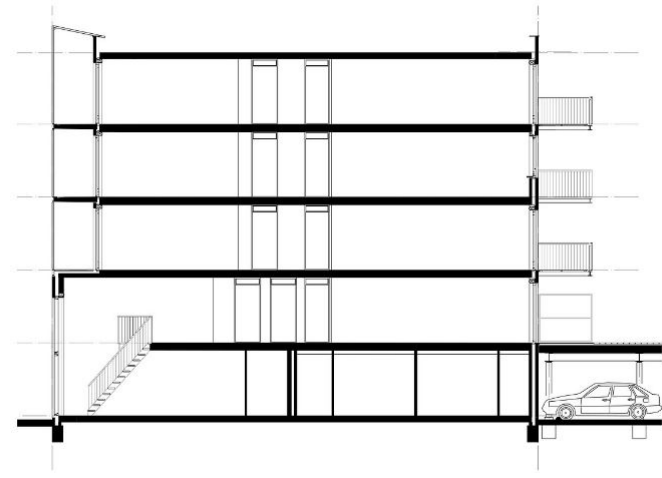


Section rowhouse © KCAP.eu

334



Floor plan © KCAP.eu



Section lamella © KCAP.eu

335